

Clapton

ARMCHAIRS

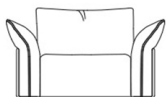
An attractive armchair with a comfortable seat and a contemporary design. The geometric volumes are emphasized by the external plates in metal upholstered in leather and by the piping in the same material. The upholstery in fabrics inspired by men's fashion, such as houndstooth, or in leather, further enhances the urban charm of the sofa, giving it a touch deeply in line with the identity of Gianfranco Ferré Home.



Armchair with structure in beech and foam. Upholstery in fabric cat. B | L.19.12 with double piping. External plates in metal upholstered in leather cat. A | L.02.05. Base in black lacquered wood.

ARMCHAIRS

Structure in beech and foam. Upholstery in fabric from GF Home collection. External plates in metal upholstered in leather from GF Home. Base in black lacquered wood.



CLP.221.A

Armchair

Standard features

L 135 D 100 H 78 cm

L 53.15 D 39.37 H 30.71 in

ARMCHAIRS

UPHOLSTERY

Fabrics

Cat. A

Cat. B

Cat. C

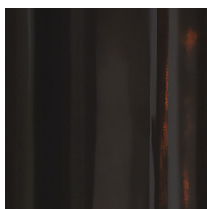
Leathers

Cat. A

Cat. B

See "Fabrics and Leathers" sheet

STRUCTURE



Ferré Black
Lacquered