

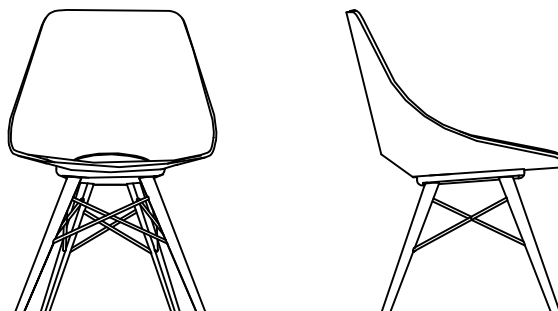
GLEE



design by Ferruccio Laviani

GLEE

design by Ferruccio Laviani



Sedia che reinterpreta la tipologia di seduta di altri nostri modelli ma unendo memoria a comfort.

Chair reinterpreting the type of seats of others among our models, but combining memory and comfort.

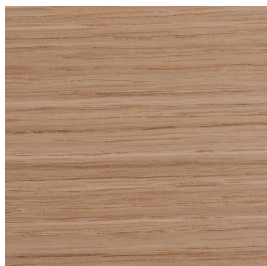
S56

	W	D	H
cm	50	55	80
in	20	22	31



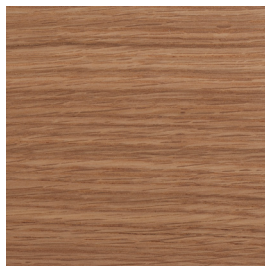
FINITURE IN LEGNO · WOODEN FINISHES

Rovere · Oak wood

*Rovere Naturale*

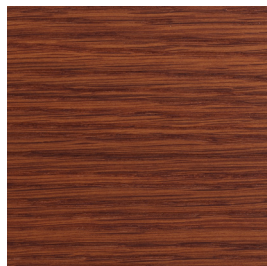
Natural Oak

Cod. R

*Rovere Gold*

Gold Oak

Cod. RO

*Rovere tinto Ciliegio*

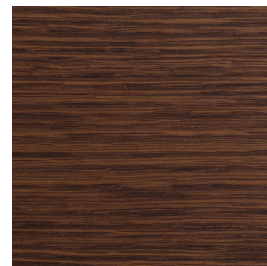
Cherrywood-stained Oak

Cod. RC

*Rovere tinto Noisette*

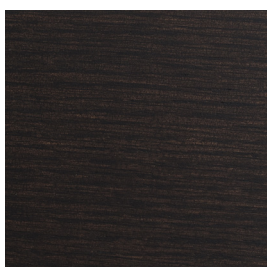
Noisette-stained Oak

Cod. RNN

*Rovere tinto Noce*

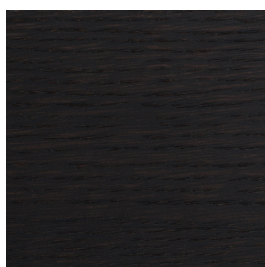
Walnut-stained Oak

Cod. RNO

*Rovere tinto Marrone*

Brown-stained Oak

Cod. RW

*Rovere tinto Wengè*

Wenge-stained Oak

Cod. RWE

*Rovere tinto Grigio*

Grey-stained Oak

Cod. RG

*Rovere laccato a poro aperto
Nero Intenso*Open pore lacquered Oak
Jet Black

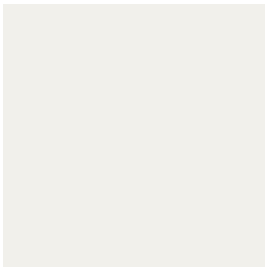
Cod. RPA - RAL-9005

RAL standard per laccatura a poro aperto:

- 9016 Bianco Traffico
- 9001 Bianco Crema
- 8022 Marrone Nerastro
- 7030 Grigio Pietra
- 6013 Verde Canna
- 3020 Rosso Traffico
- 3004 Rosso Porpora

Standard RAL for open pore lacquering:

- 9016 Traffic White
- 9001 Cream
- 8022 Black Brown
- 7030 Stone Grey
- 6013 Reed Green
- 3020 Traffic Red
- 3004 Purple Red

LACCATURE · LACQUERING*Finitura opaca o lucida poliesteri · Mat or glossy polyester finish**Bianco Traffico*

Traffic White

RAL 9016

*Nero Intenso*

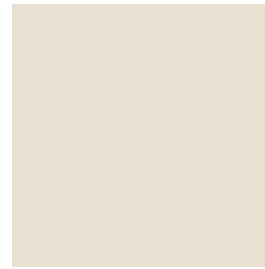
Jet Black

RAL 9005

*Grigio Pietra*

Stone Grey

RAL 7030

*Bianco Crema*

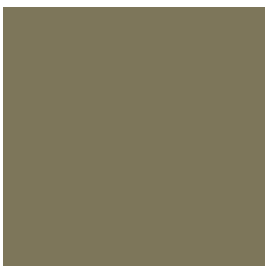
Cream

RAL 9001

*Marrone Nerastro*

Black Brown

RAL 8022

*Verde Canna*

Reed Green

RAL 6013

*Rosso Traffico*

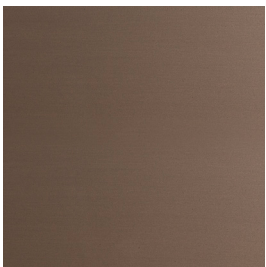
Traffic Red

RAL 3020

*Rosso Porpora*

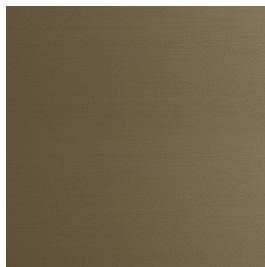
Purple Red

RAL 3004

LACCATURE · LACQUERING*Metallo liquido · Liquid metal**Bronzo*

Bronze

Cod. MLB

*Ottone*

Brass

Cod. MLO

*Stagno*

Tin

Cod. MLS

CURA E MANUTENZIONE DEL LEGNO

I legni utilizzati per i nostri prodotti sono di altissima qualità e lavorati con la massima maestria.

Le possibili differenze di tonalità o sfumature di colore sono da considerarsi caratteristiche naturali dei materiali e dimostrazione dell'artigianalità di lavorazione.

Per la pulizia quotidiana dei legni naturali, tinti e laccati, si consiglia di utilizzare un panno morbido o in microfibra, inumidito con acqua.

Non utilizzare prodotti spray, cere e prodotti che contengano alcool, solventi o abrasivi.

Pulire le macchie quando sono ancora fresche.

Tutti i prodotti sono realizzati nel rispetto dell'uomo e dell'ambiente.

CARE AND MAINTENANCE OF WOOD

The wood used for our products are of the highest quality and manufactured with the greatest craftsmanship.

Possible differences in colour tonality or shades are due to the natural characteristics of the materials and are to be considered as proof of artisanal workmanship.

For routine cleaning of natural, stained or lacquered wood, we suggest to use a soft or a microfiber cloth, dampened with water.

Never use spray products, wax or any product containing alcohol, solvent or abrasive.

Clean stains while they are still fresh.

All products are made with respect for the mankind and the environment.